



For further information please contact:

Professor K. Kyriacou, PhD  
Head, EM/Molecular Pathology Department  
Tel. 22393631  
Email: kyriacos@cing.ac.cy

Professor K. Christodoulou, PhD  
Head, Neurogenetics Department  
Tel: 22392649  
Email: roula@cing.ac.cy

C. Sismani, PhD  
Assistant Professor  
Head, Cytogenetics & Genomics Department  
Tel: 22392708  
Email: csismani@cing.ac.cy

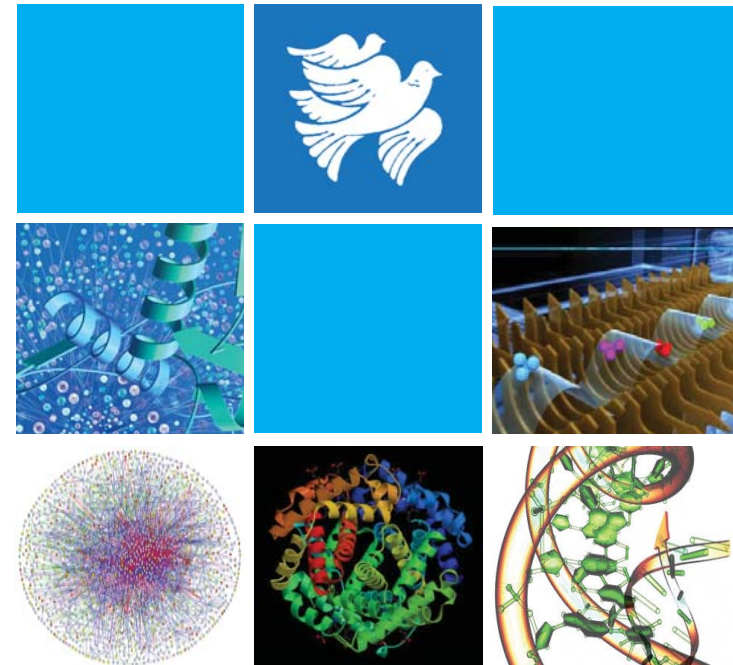
THE CYPRUS INSTITUTE OF  
NEUROLOGY & GENETICS  
6 Int. Airport Ave. Ag. Dhometios  
2370 Nicosia, Cyprus  
P.O. Box 23462, 1683, Nicosia, Cyprus

[www.cing.ac.cy](http://www.cing.ac.cy)

ESTABLISHMENT OF A

# TRANSLATIONAL FACILITY

AT  
THE CYPRUS INSTITUTE OF  
NEUROLOGY & GENETICS



The Cyprus Institute of Neurology and Genetics (CING), was established in 1990, as a bi-communal, non-profit, private, academic, medical center with the aim to function as an International Centre of Excellence and a Regional Referral Centre in the areas of Neurology, Genetics and Biomedical Sciences.

CING is proud to announce that following the success of two major research applications, it has been able to secure more than 1,200,000 euros. This money has been used to establish a state of the art Translational Facility which is the first of its kind in Cyprus and which will operate as a core facility for our country. The facility will be equipped with state of the art and advanced equipment for carrying out analysis of DNA and proteins in patient samples.

The new facility will consist of a genomics platform for advanced Next Generation sequencing analysis, as well as two proteomic platforms for carrying out protein analysis. Both types of analyses are very important for diagnosing patients who suffer from complex genetic diseases and until remain undiagnosed. In addition these platforms are essential for advancing our research efforts in new areas such as discovering new biomarkers and new drugs for complex diseases.

The Establishment of the new Translational Facility presents a major improvement in the CING infrastructure. With this equipment now in hand, the scientists and doctors will be able to overcome some of the previous barriers and will be able to:

- Offer a more detailed molecular analysis to patients who are still undiagnosed, in order to discover the molecular cause(s) of their disease and diagnose their condition. This will mean that many undiagnosed patients in Cyprus, will now be diagnosed and will benefit from more effective treatments, and programs of prevention.
- Carry out simultaneous assessment of many patients' samples, for different diseases which will reduce current costs and waiting times. This will allow earlier diagnosis, will improve the quality of life of patients and will also ensure that new tests which currently too expensive, will become available.
- Organise and establish new research projects for better understanding the pathogenesis of complex diseases that are frequent in the Cypriot population such as cancer, diabetes and neurological disorders.
- Become more competitive and more successful in securing research funds from National and International agencies.

The Establishment of the Translational Facility is financially supported by:

- The Norway Grants through the Directorate General for European Programmes, Coordination and Development of the Republic of Cyprus Government.
- The Project NEW INFRASTRUCTURE/NEKYP/0311/17 which is co-financed by the European Regional Development fund and the Republic of Cyprus through the Research Promotion Foundation.

and

- The Cyprus Institute of Neurology and Genetics.

It is noted that our projects in proteomic research have been supported by the following organisations:

- The Cyprus Research Promotion Foundation, Europa Donna Cyprus, The Pancyprian Association of Cancer Patients and Friends (PASYKAF) and Marfin Laiki Bank now Bank of Cyprus.

Ultimately the establishment of this Translational Facility will contribute towards improving public health and reducing health inequalities in Cyprus.